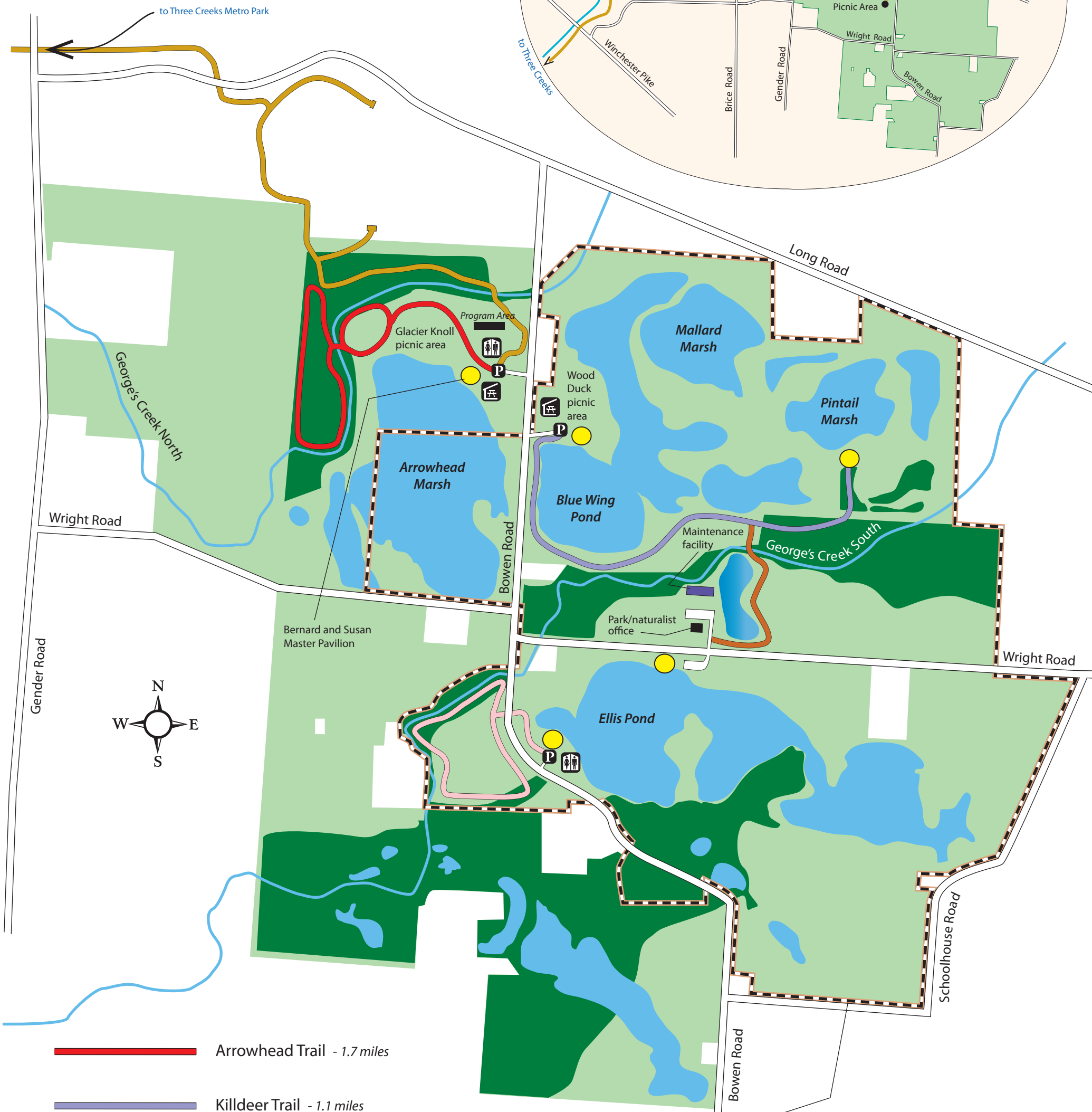
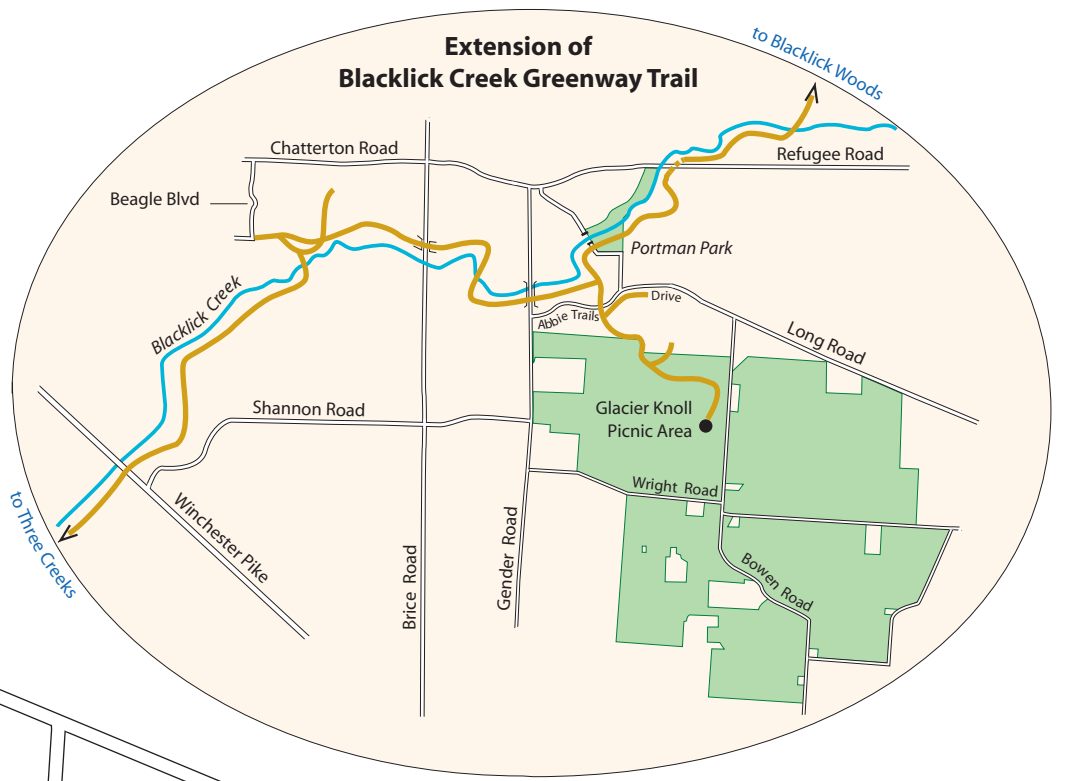


Pickerington Ponds Metro Park



- Arrowhead Trail - 1.7 miles
- Killdeer Trail - 1.1 miles
- Meadow Lark Trail - 1 mile
- Yellowlegs Trail - 0.5 miles
- Blacklick Creek Greenway Trail
 - from Glacier Knoll to park boundary - 0.8 miles
 - from Glacier Knoll to Three Creeks - 9 miles
 - from Glacier Knoll to Refugee Road - 1.25 miles
 - from Refugee Road north to Blacklick Woods - 2.25 miles
 - (see the Extension to Blacklick Creek Greenway Trail inset at top right of the map)

Off-trail activity is prohibited in the nature preserve, around the osprey nest, and in all other park land east of Bowen Road

- Fields and meadows
- Woodland
- Ponds, wetlands, creeks
- Observation areas
- P Parking
- ☰ Picnic shelter
- ♿ Restrooms